



# Jasmine Grandiflorum

(*Jasminum grandiflorum*)

Lot#: ABIDP17-PY

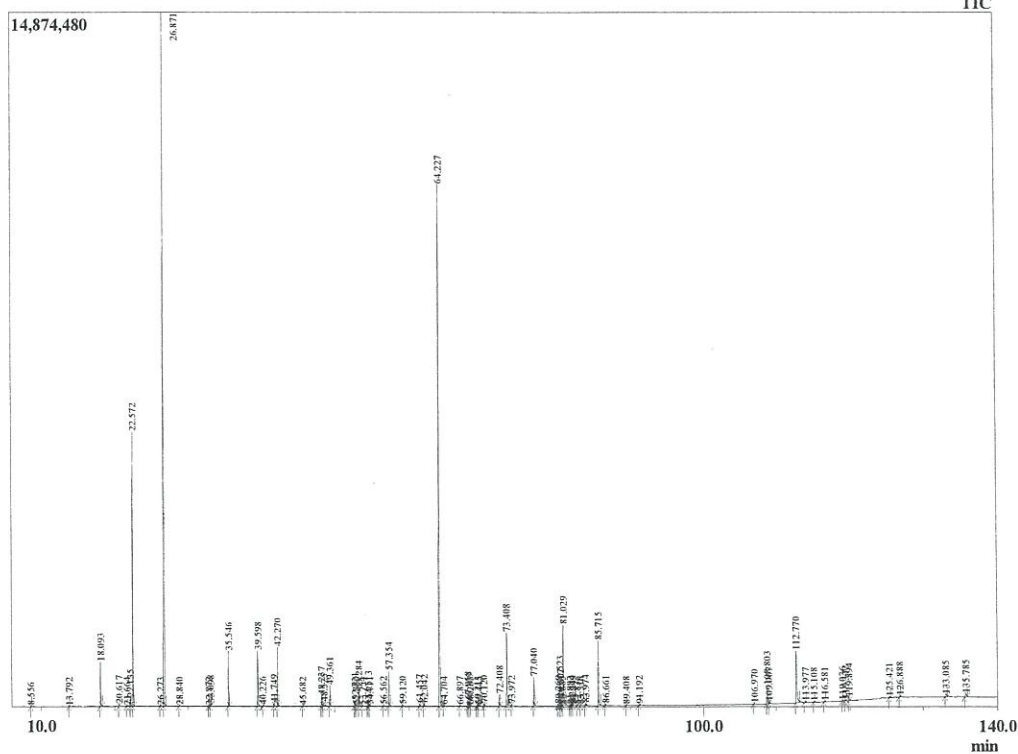
Country: India

Ancient Healing Oils, LLC  
 (800)409-0995  
 260 Maple Street  
 Friendsville, MD 21531  
 www.AncientHealingOils.com  
 John@AncientHealingOils.com

Analyzed : 12/4/2018 1:09:01 AM  
 Sample Type : Absolute  
 Sample Name : Jasminum grandiflorum  
 Injection Volume : 0.10

Sample Information

Chromatogram Jasminum grandiflorum



R. Time	Name	Area%
8.556	Hex-3(Z)-enol	0.02
13.792	Benzaldehyde	0.02
18.093	Benzyl alcohol	1.46
20.617	para-Cresol	0.08
21.664	trans-Linalool oxide (furanoid)	0.02
22.135	Methyl benzoate	0.28
22.572	Linalool	9.68
26.273	Benzoic acid	0.02
26.871	Benzyl acetate	30.69
28.840	Methyl salicylate	0.02
32.872	Jasmine unidentified	0.03
33.098	2-Phenethyl acetate	0.08
35.546	Indole	2.01
39.598	Eugenol	2.01
40.226	Jasmine unidentified	0.03
41.749	(E)-Jasmone	0.12
42.270	(Z)-Jasmone	2.26
45.682	trans-Isoeugenol	0.02
48.237	Jasmine lactone	0.48
48.525	(Z,Z)-alpha-Farnesene	0.18
49.361	(E,E)-alpha-Farnesene	0.80
52.721	trans-Nerolidol	0.22
52.880	Jasmine unidentified	0.04
53.284	3-cis-Hexenyl benzoate	0.67
53.754	Hexyl benzoate	0.02
54.513	Methyl N-acetylanthranilate	0.27
54.711	Jasmine unidentified	0.04
56.562	Jasmine unidentified	0.03
57.354	cis-Methyl jasmonate	1.41
59.120	epi-Methyl jasmonate	0.06
61.457	(E,E)-Farnesol	0.13
62.042	Jasmine unidentified	0.12
64.227	Benzyl benzoate	26.44
64.704	Jasmine unidentified	0.02
66.897	Jasmine unidentified	0.04
67.958	Neophytadiene	0.27
68.169	Phytone	0.23
68.285	Jasmine unidentified	0.03
69.213	Jasmine unidentified	0.06
69.445	Benzyl salicylate	0.03
70.120	Jasmine unidentified	0.11
72.408	Methyl palmitate	0.53
73.408	Isophytol	3.23
73.972	Palmitic acid	0.07
77.040	(E,E)-Geranyl linalool	1.19
80.269	Methyl linoleate	0.08
80.523	Methyl linolenate	1.02
80.617	Methyl oleate	0.28
80.885	Jasmine unidentified	0.02
81.029	Phytol	3.85
81.882	Jasmine unidentified	0.03
82.111	Linolenic acid	0.12
82.249	Jasmine unidentified	0.05
82.836	Jasmine unidentified	0.02
83.316	Jasmine unidentified	0.03
83.974	Jasmine unidentified	0.11

R.Time	Name	Area%
85.715	Phytol acetate	2.97
86.661	Jasmine unidentified	0.07
89.408	Jasmine unidentified	0.02
91.192	Jasmine unidentified	0.05
106.970	Jasmine unidentified	0.03
108.803	Squalene	1.10
109.007	Jasmine unidentified	0.16
112.770	2,3-Epoxy-2,3-dihydrosqualene	3.26
113.977	Jasmine unidentified	0.03
115.108	Jasmine unidentified	0.06
116.581	Jasmine unidentified	0.06
119.036	Jasmine unidentified	0.03
119.372	Jasmine unidentified	0.09
119.894	Jasmine unidentified	0.20
125.421	beta-Amyrin	0.08
126.888	alpha-Amyrin	0.09
133.085	Jasmine unidentified	0.22
135.785	Jasmine unidentified	0.32
		100.00